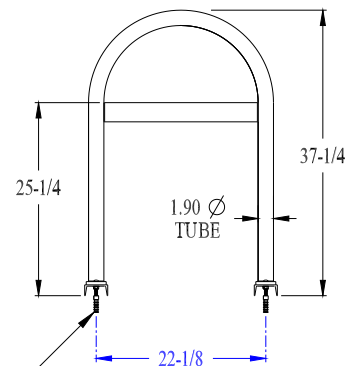


TOP VIEW



ENLARGED VIEW

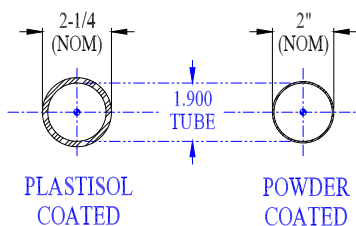
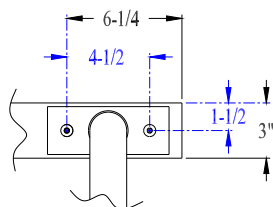
SCALE: 1/8" = 1"

3/8-16NC
CONCRETE
LAGS (4)

{6-BIKE} CAPACITY
POWDER COATED
RACKS & RAILS
{SHOWN}



CHANNEL RAIL
END VIEW
SCALE 3:1
{TYP}



PLASTISOL
COATED

POWDER
COATED

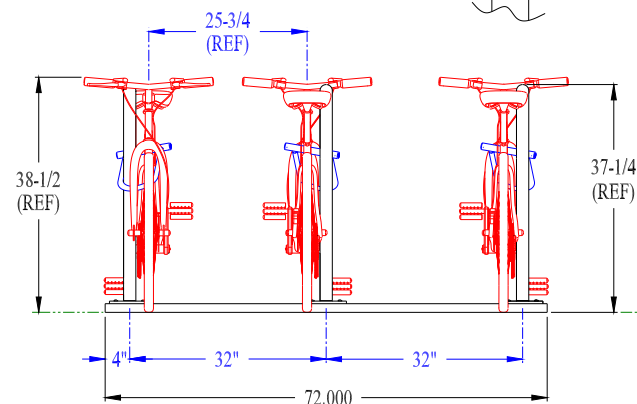
MOUNTING RAIL CONTRUCTION IS (2) 3" X 4.1# STRUCTURAL STEEL C-CHANNEL RAILS EACH WITH (2) 1/2" LAG HOLES & (6) 1/2" MOUNTING HOLES FOR RACKS

(3) U-RACKS WHICH ARE 1.9" Ø SCH'L 40 BLACK PIPE & 3/8" MOUNTING PLATE WITH (2) 1/2" HOLES AND ALSO 1/4" STEEL PLATE CENTER BRACE {OPTIONAL}

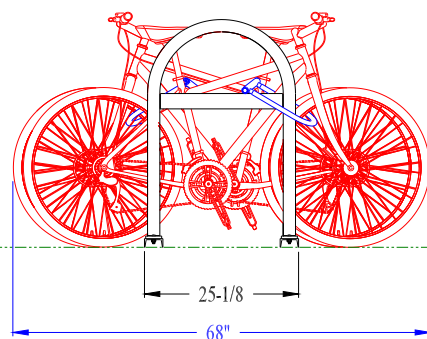
RAILS & RACKS ARE BLACK POWDER COATED STANDARD AND PLASTISOL COATING IS ALSO AVAILABLE

SHIPPING WEIGHT IS:

POWDER COATED = 225 LBS. OR 102.1 KG. PER ASSEMBLY
PLASTISOL COATED = 250 LBS OR 113.4 KG. PER ASSEMBLY



FRONT VIEW



SIDE VIEW

SHEET 1 OF 1	A	RELEASE FOR REFERENCE	12/10/18
	REV	DESCRIPTION	DATE
TOLERANCES UNLESS OTHERWISE SPECIFIED: +/-	C-RAIL-MOUNTED (U-RACKS)		
	Cycle Safe		
	5211 CASCADE ROAD - SUITE 210		
	GRAND RAPIDS, MI 49546		
	www.cyclesafe.com		
.X .030	BOB SLYH	12/10/18	
.XX .010	CHECKED	DATE	
.XXX .005	APPROVED	DATE	
ANGLE 1/2°			
REV	D	{BRACED} RACKS {6-BIKE} ASSEMBLY	
REV A			